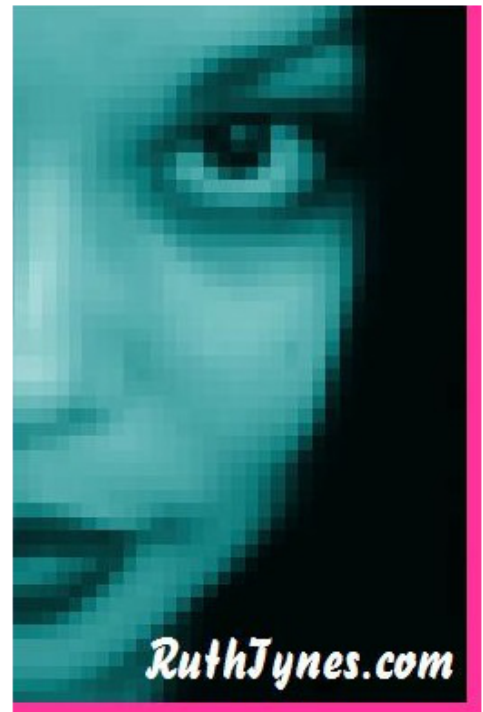


About

*Ruth*

## Which One???

**Morning or Night Person =**  
Definitely "a Night Person". I often joke around about being "a Vampire" and "a Mad Scientist", because when most people are getting up for the Day, I am going to Sleep after Working hard all Night/Early AM. (lol)



**Introvert or Extrovert = 50/50.** It depends on the Social Situation and what I deem to be appropriate expressions of my emotions. #Manners #DoUntoOthers

**Indoor or Outdoor Person = 50/50**

**Warm or Cold Weather =** I am definitely a Warm Weather Girl! (lol)



**Cat or Dog Person =**  
Dog. Although, I have never owned either one.

**Singing or Dancing =**  
In terms of the Talent department, I am much better at Singing. (lol) But I love to Dance! It's a part of my regular Workout Routine. (smile)